

# 1+1 Alginate Gel Masque

(charcoal gel base + collagen, retinol, peptide active powder)

has been designed for deep facial hydrating and conditioning of the skin. With its natural collagen, hypoallergenic, and easy to use application and clean up, it is a desirable way to get collagen enriched and hydrated on a regular basis. Mask Pack is packaged in a simple-to-open foil packet. Clean up is easy and convenient. Simply remove and discard the mask. No further cleaning or washing of the face is needed.

## KEY EFFECTS

Strong Moisture Supply

1 gel base contains 15% of Humectant Ingredients (Glycerin, Butylene Glycol)  
+ 1 active powder contains over 68% of Humectant Ingredient (Glucose)

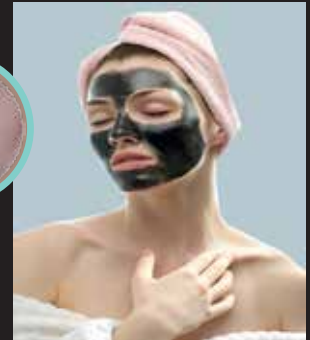
Excellent cooling effect (Post Treatment), Lightening,  
Pore care (Pore tightening & Sebum/Oil control), Detox,  
Wrinkle care, Power lifting, Collagen synthesis,  
Better nutrition delivery support



## Comparison

demonstrate difference

### Moisturizing Effect



No water needed, No residue & easy removal, Various configuration possible  
Extra benefit from Active powder, All season use (Cool & Warm condition), Perfect Adhesion

**PRE & POST CARE**  
ALL SKIN TYPE

NO	PARABEN	NO	ALCOHOL	NO	MINERAL OIL	NO	PHthalATES
NO	TRICLOSAN	NO	GMO	NO	TALC	NO	PETRO CHEMICAL

### Elasticity & Viscosity

Skininstinct  
1+1gel base  
masque



VS

powder base  
mask



RESULTS ARE GUARANTEED